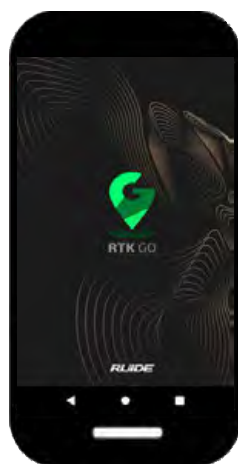


ESTACION TOTAL

RQS



TELESCOPIO

Longitud	154mm
Diámetro	Telescopio: 45mm; EMD: 50mm
Aumento	30x
Imagen	Directo
Campo visual	1°30'
Resolución	3"
Enfoque mínimo	1.5m

DISTANCIA

Alcance con prisma	5,000m
Precisión	±(2mm+2mm*D)m.s.e
Alcance sin prisma	1,500m
Precisión	±(3mm+2mm*D)m.s.e Preciso:
Tiempo de medición	0.3s; Normal: 0.2s ATMOSense
Corrección de PPM	Auto Corrección Ingreso manual
Constante de prisma	

ÁNGULOS

Precisión	2"
Método	Codificación absoluta
Sistema de detección	H: doble; V: doble
Lectura mínima	1"/5"/10"
Díámetro del círculo	79mm
Ángulo vertical 0°	Zenith: 0°; Horizontal: 0°
Unidades	360°/400gon/6400mil

PANTALLA

Unidad de pantalla	Gráfica, 160*90 con iluminación
Número de pantallas	2
Teclado	Alfanumérico

PLOMADA - LÁSER

Tipo	Class II láser rojo
Precisión	0.6-2.0m
Diámetro del punto láser	1mm
- ÓPTICA	±3mm
Imagen	Directo
Aumento	3X
Alcance de enfoque	0.3m - ∞
Campo visual	5°

COMPENSADOR

Sensor	Doble eje
Método	Electro-liquido
Alcance	6'
Resolución	1"

NIVELES

Nivel de plato	30"/2mm
Nivel circular	8'/2mm

INTERFAZ DE DATOS

Memoria interna	>10,000 puntos
Datos interfaz	USB2.0
Wireless *	Bluetooth 2.1, WT12

GENERAL

Quick-meas Bóton	Si
Peso	5.4kg
Dimensiones	353 (H) * 206 (L): 200 (W) mm
Temperaturas de trabajo	-20°C a 50°C
Batería	Li-on batería, 7.4V, 3000mAh
Protección	IP65
Duración de trabajo	12h

ITEM LIST

* No disponible en RQS Lite.

Android App RTKgo
Carrying case *1
Total station *1
Battery *2
Charger & adapter *1
Reflecting sheet *1
Safety Vest *1
Quick Guide *1
Warranty Card *1

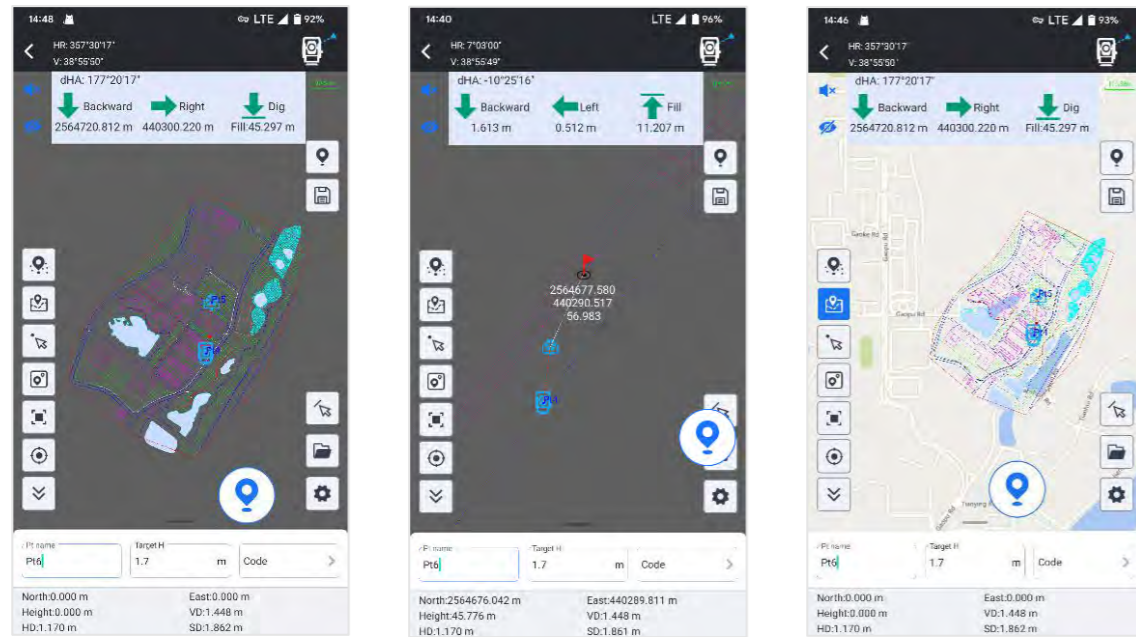
7F, Sicheng Road, Guangzhou 510663, China
www.ruide.xyz www.ruideinstrument.com
export@ruideinstrument.com



ruideinstrument
RUIDEPositioning

Total Station Module of RTKgo App: Four Main Features to Give You More Power & Freedom

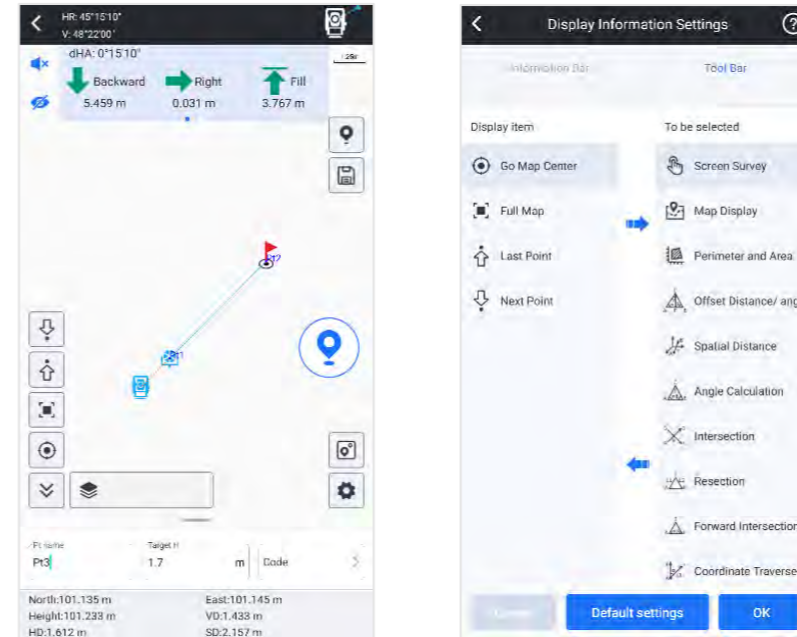
CAD Stakeout: Increasing Productivity & Decreasing Error



CAD Stakeout allows you to import **CAD basemap** and stakeout it, without input point coordinates one by one.

When you need, you can connect to your local online map and overlap it to CAD basemap, to increase the precision of your job.

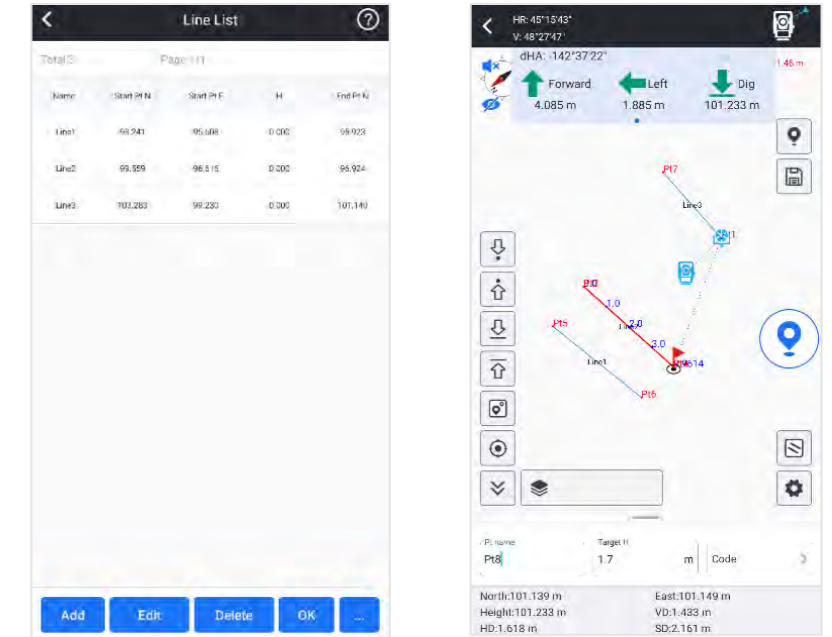
Point Survey & Stakeout: More Ease and Convenience



With graphic display, now it is easy to you to observe the relation between occupied point and target points. It will help you to make less mistakes when measuring many points.

The stakeout program screen displays information more completely, indicates target points more intuitively, your workflow will be smoother than before.

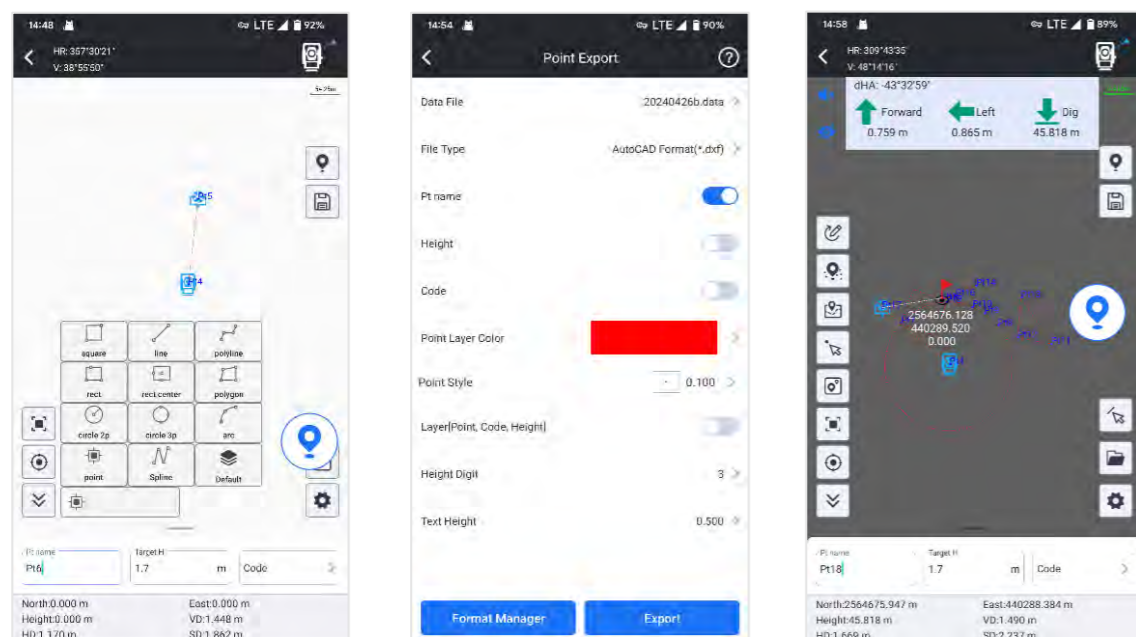
Line Stakeout: Smarter than Traditional Way



User is allowed to manually choose points from library, line will be formed by program automatically. Then user input interval distance, setout points will be calculated out and displayed on screen.

This function is suitable for road or other objective that is containing lines.

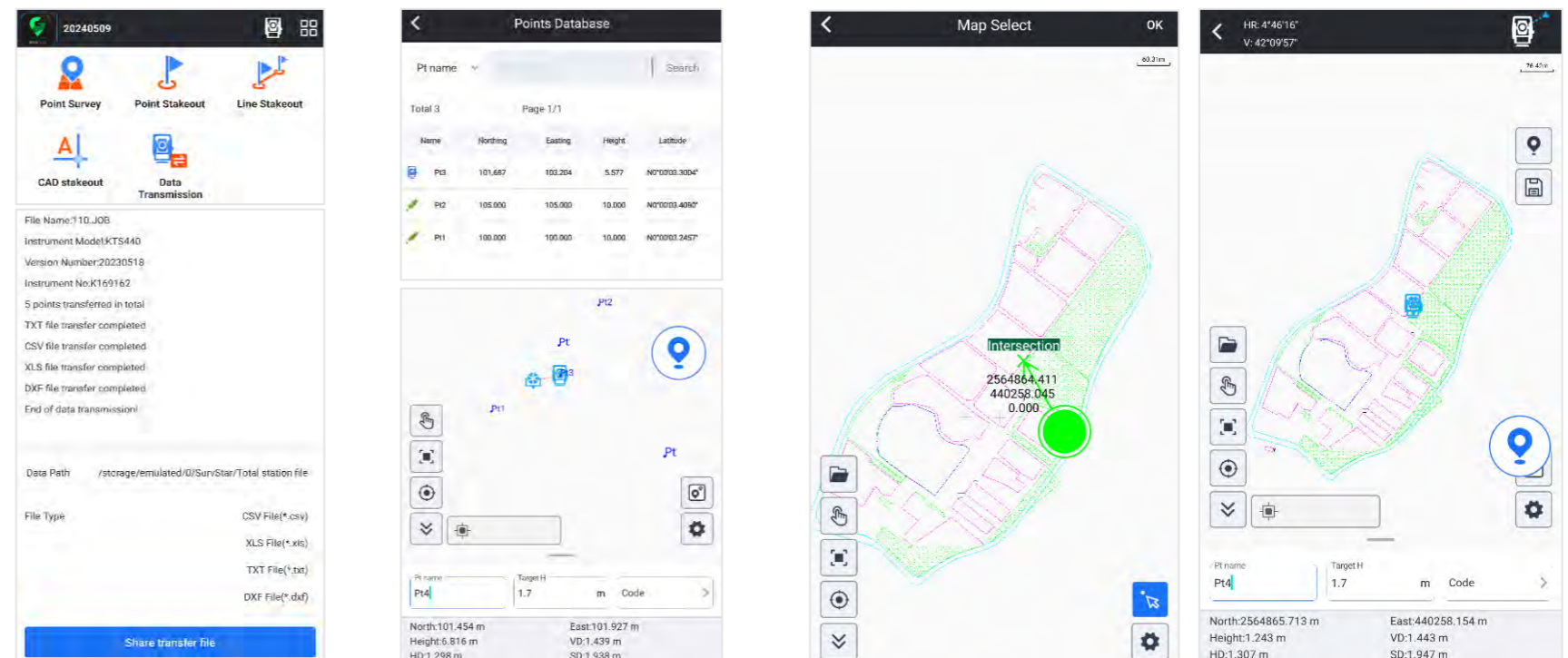
Measure & Draw: Save Time in Both Field work and Indoor Work



User is allowed to draw line, polygon, circle...up to 11 kinds of graphic, while measuring target points. No need to manually draw draft map anymore.

User is allowed to manage different objectives as different layers. The draft map can be saved and output in CAD format, and to be used in indoor works.

Other Features: More Innovation, No Limitation



Download & Share
(.csv, .dxf, .txt, .xls)

Resection

Set Occupied Point from CAD basemap or Graphic Map

Other Modules of RTKgo App: GNSS, Marine Survey, 3D Laser Scanner...