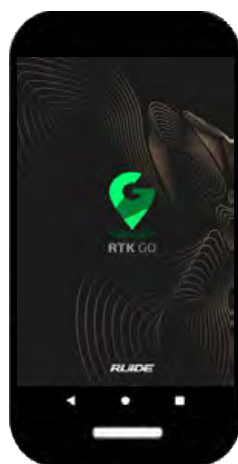


# TOTAL STATION

## RQS



## TELESCOPIC

Length	154mm
Diameter	Telescopic: 45mm; EMD: 50mm
Magnification	30x
Image	Erect
Field of View	1°30'
Resolving Power	3"
Minimum Focus	1.5m

## DISTANCE

Single Prism Range	5,000m
Accuracy	±(2mm+2mm*D)m.s.e
Non-prism Range	1,500m
Accuracy	±(3mm+2mm*D)m.s.e
Measuring Time	Fine: 0.3s; Normal: 0.2s
Meteorologic Correction	ATMOSense Auto Correction
Prism Constant	Manual

## ANGLE

Accuracy	2"
Method	Absolute Encoding
Detecting System	H: dual; V: dual
Minimum Reading	1"/5"/10"
Diameter of Circle	79mm
Vertical Angle 0°	Zenith: 0°; Horizontal: 0°
Unit	360°/400gon/6400mil

## DISPLAY

Display Unit	Graphic, 160*90 with backlight
No. of Displays	2
Keyboard	Alphanumeric

## PLUMMET - LASER

Type	Class II red laser
Accuracy	<0.4mm @ 1.5m height
Spot Diameter	<1.5mm @ 1.5m height
<b>- OPTICAL</b>	
Image	Erect
Magnification	3X
Focusing Range	0.3m - ∞
Field of View	5°

## TILT CORRECTION

Tilt Sensor	Dual axis
Method	Liquid electric
Range	6'
Resolution	1"

## LEVEL

Plate Level	30"/2mm
Circular Level	8'/2mm

## DATA INTERFACE

Internal Memory	> 10,000 points
Data Interface	USB2.0
Wireless *	Bluetooth 2.1, WT12

## GENERAL

Quick-meas Button	Yes
Weight	5.4kg
Dimension	353 (H) * 206 (L): 200 (W) mm
Operating Temperature	-20°C to 50°C
Battery	Li-on battery, 7.4V, 3000mAh
Water & Dust Proof	IP65
Working Duration	16h

\* Not available on RQS Lite.

## ITEM LIST

Android App RTKgo  
Carrying case \*1  
Total station \*1  
Battery \*2  
Charger & adapter \*1  
Reflecting sheet \*1  
Safety Vest \*1  
Quick Guide \*1  
Warranty Card \*1



7F, Sicheng Road, Guangzhou 510663, China  
www.ruide.xyz www.ruideinstrument.com  
export@ruideinstrument.com



ruideinstrument

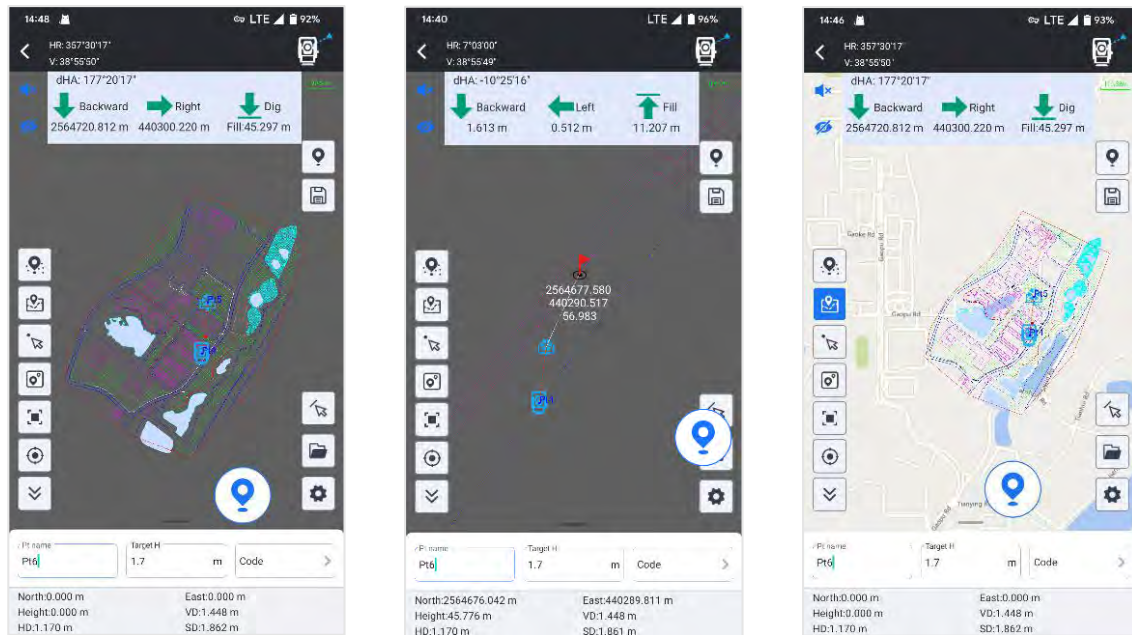


RUIDEPositioning



# Total Station Module of RTKgo App: Four Main Features to Give You More Power & Freedom

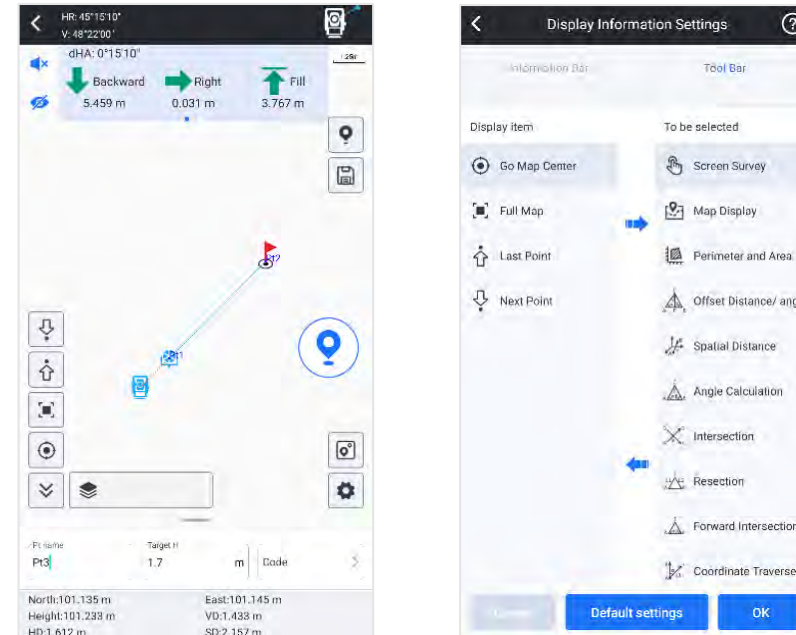
## CAD Stakeout: Increasing Productivity & Decreasing Error



CAD Stakeout allows you to import **CAD basemap** and stakeout it, without input point coordinates one by one.

When you need, you can connect to your local online map and overlap it to CAD basemap, to increase the precision of your job.

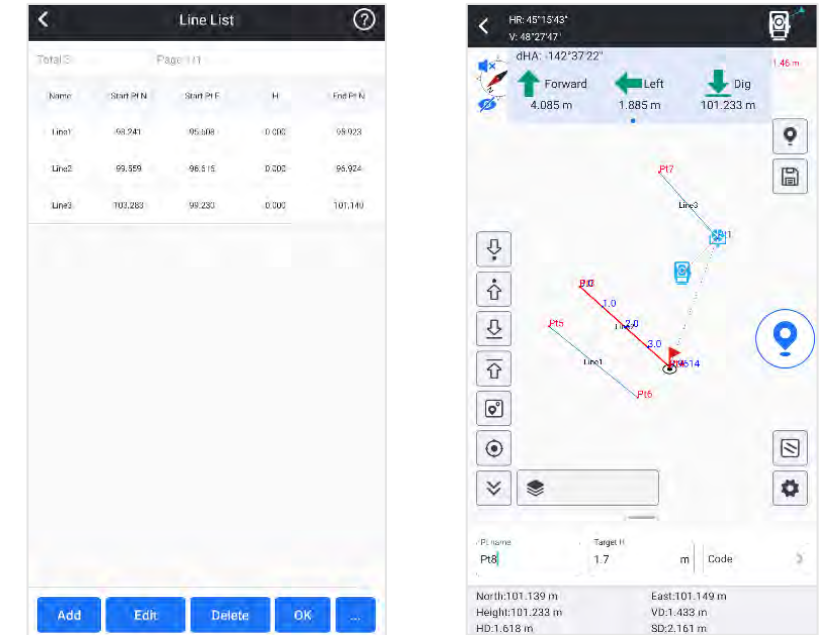
## Point Survey & Stakeout: More Ease and Convenience



With graphic display, now it is easy to you to observe the relation between occupied point and target points. It will help you to make less mistakes when measuring many points.

The stakeout program screen displays information more completely, indicates target points more intuitively, your workflow will be smoother than before.

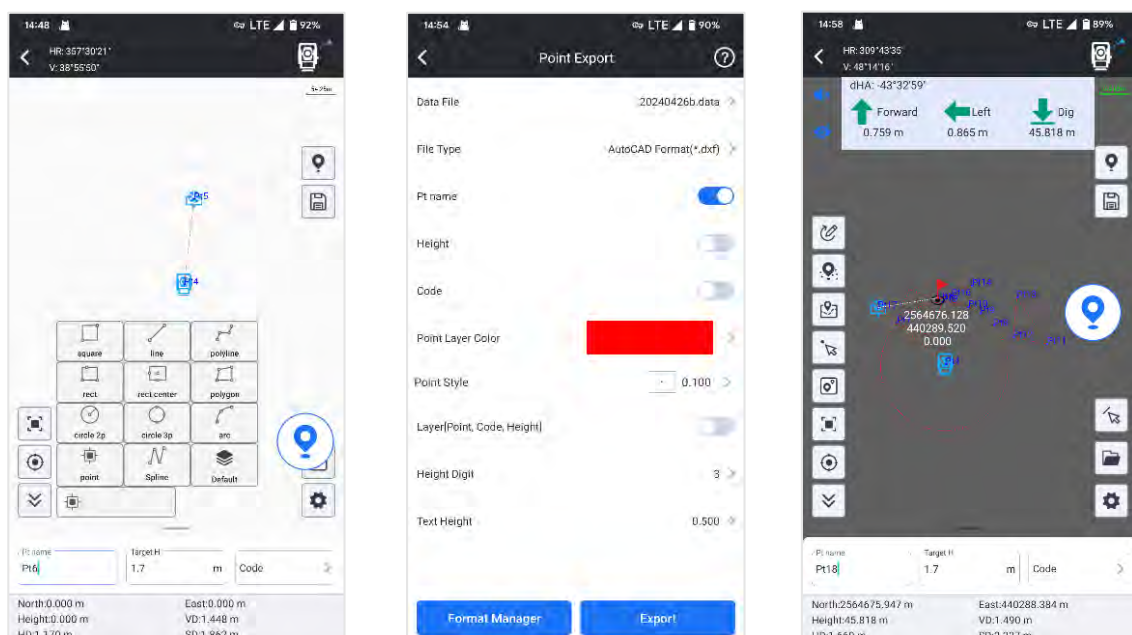
## Line Stakeout: Smarter than Traditional Way



User is allowed to manually choose points from library, line will be formed by program automatically. Then user input interval distance, setout points will be calculated out and displayed on screen.

This function is suitable for road or other objective that is containing lines.

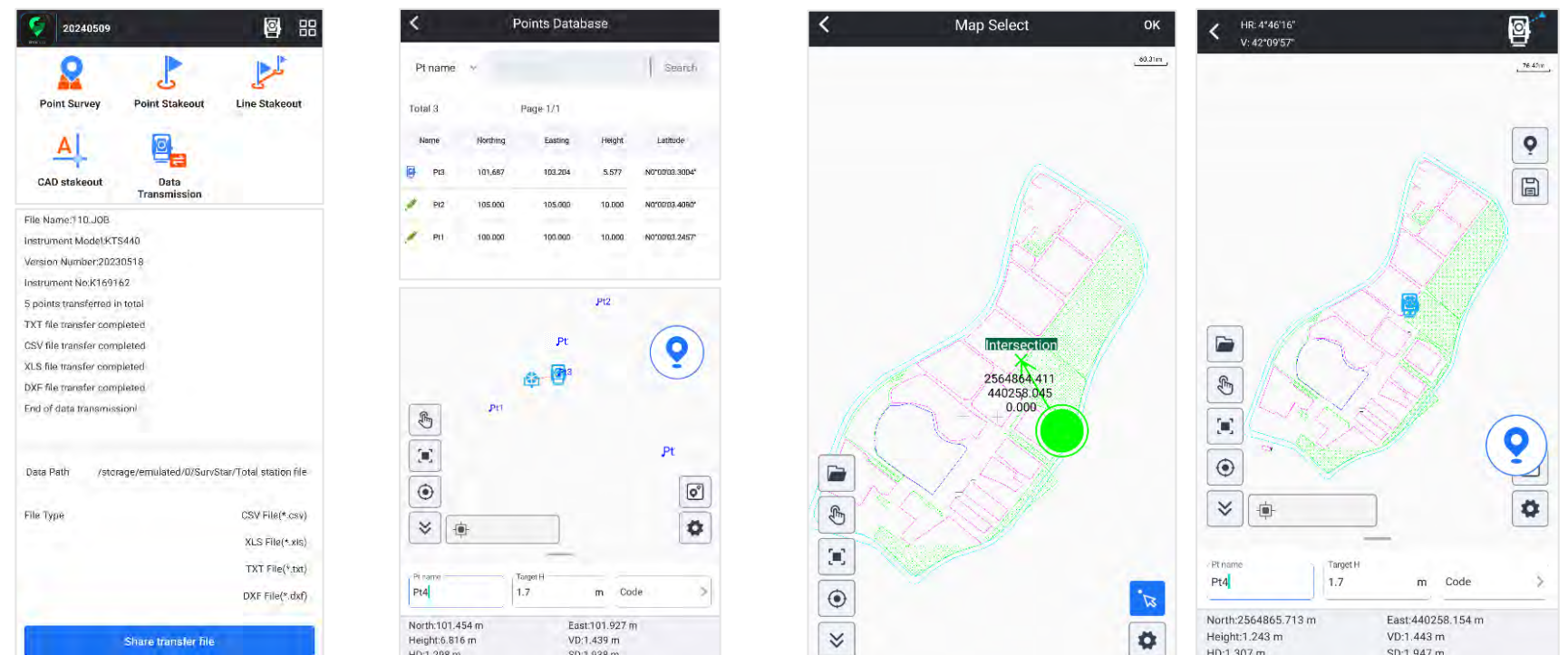
## Measure & Draw: Save Time in Both Field work and Indoor Work



User is allowed to draw line, polygon, circle...up to 11 kinds of graphic, while measuring target points. No need to manually draw draft map anymore.

User is allowed to manage different objectives as different layers. The draft map can be saved and output in CAD format, and to be used in indoor works.

## Other Features: More Innovation, No Limitation



Download & Share  
(.csv, .dxf, .txt, .xls)

Resection

Set Occupied Point from CAD basemap or Graphic Map

## Other Modules of RTKgo App: GNSS, Marine Survey, 3D Laser Scanner...