

# DIGITAL LEVEL

## RL series



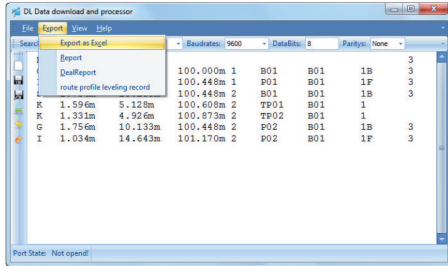
- MINIMIZE HUMAN ERRORS, NO MORE MISREADING
- AVERAGING MODE FOR MORE ACCURATE RESULTS
- SHORTEN THE MEASURING TIME BY A HALF
- ABUNDANT SURVEYING SOFTWARE SUPPORT, AUTOMATIC ERROR COMPENSATION
- INTERNAL STORAGE OR SD CARD MEMORY OPTIONAL, PAPERLESS WORKING

**RL***IDE*

## Key Features

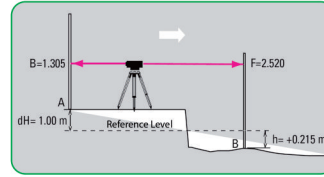


Extend the memory with a micro SD card, plus the mini-USB, making the data storage and transfer most suitable for work.

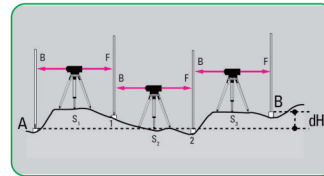


With RUIDE RL series, data can be downloaded to your computer via USB interface. It enables a smooth data transfer to Microsoft Excel.

## Onboard software facilitate your job



This function calculates the height difference between points. Enter your benchmark, measure your backsight and then your various targets (foresights).



Enter your starting benchmark, measure your backsights, intermediate sights and foresights until you have reached your final point.

## Specification

	RL-07	RL15
<b>Height accuracy (standard deviation for 1km double run leveling)</b>	Digital reading	0.7mm
	Optic reading	2.0mm
<b>Distance accuracy</b>	Digital reading	$D \leq 10m: 10mm; D > 10m: D * 0.001$
<b>Distance range</b>	Digital reading	1.8m~105.0m
<b>Minimum display</b>	Height	0.01mm/0.1mm
	Distance	0.1cm/1cm
<b>Measuring time</b>		<3 second
<b>Telescope</b>	Magnification	32×
	Resolving power	3"
	Field of view	1° 20'
	Multi-constant	100
	Add-constant	0
<b>Compensator</b>	Type	magnetic-damped
	Range	±12'
	Accuracy	0.30" /1'
<b>Data storage</b>	Storage	16MB
	Point name	Increasing/decreasing/ user-define
	Connection	mini-USB/micro SD card
<b>Circular vial accuracy</b>		8/2mm
<b>Auto power off</b>		5 minutes OFF
<b>Horizontal circle</b>	Graduation	1°
<b>Display</b>	LCD display of 160*64 dpi with illumination	LCD display of 128*32 dpi with illumination
<b>Water &amp; Dust Proof</b>		IP54
<b>Working temperature</b>		-20°C ~ 50°C
<b>Dimension</b>		230mm(L) × 150mm(W) × 210mm(H)
<b>Weight</b>		2.5kg



## RUIDE SURVEYING INSTRUMENT CO.,LTD

Add: 7/F, South Geo-information Industrial Park, No.39, Si Cheng Road, Tian He IBD, Guangzhou 510663, China  
 Tel: +86-20-23380961 Fax: +86-20-23380962  
 Email: export@ruideinstrument.com Http://www.ruideinstrument.com