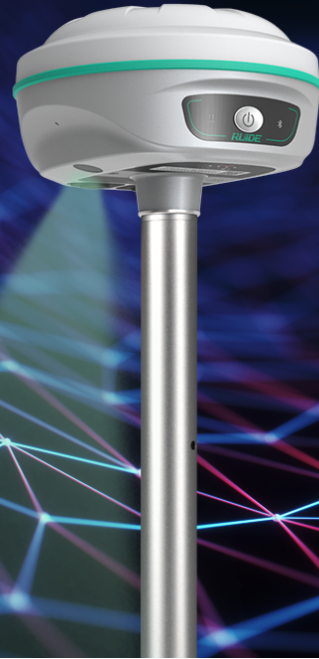


# ROVA 1s



With an integrated HD camera on the bottom of ROVA 1s, you can just follow the guidance on RTK GO field app and reach the stake out point in a more efficient and intuitive way.

# SPECIFICATIONS

## POSITIONING

Board Model	Mk-803
Channels	1,598
GPS	L1 C/A, L2C, L2P, L5
GLONASS	L1 C/A, L1P, L2C/A, L2P
BEIDOU	B1, B2, B3
GALILEO	E1, E5A, E5B, E6, E5 AltBOC
QZSS	L1, L2C
L-band	Supportable
Positioning Rate	1-20Hz

## ACCURACY

Code Differential	H: 0.25m ± 1ppm (rms) V: 0.50m ± 1ppm (rms)
Static	H: 2.5mm ± 0.5ppm (rms) V: 5mm ± 0.5ppm (rms)
Real-time Kinematic	H: 8mm ± 1ppm (rms) V: 15mm ± 1ppm (rms)
Network RTK	H: 8mm ± 0.5ppm (rms) V: 15mm ± 0.5ppm (rms)

## IMU MEASUREMENT

Tilt Angle	Maximum 60°
Accuracy	10mm + 0.7mm/°

## DATA STORAGE

Type & Storage	SSD 4GB External USB Pen drive
Data Transfer	USB Transfer Supports FTP/HTTP download
GPS Output Format	CMR, RTCM 2.x, RTCM 3.x, NMEA 0183, PJK plane coordinates, binary code
Network Model	VRS, FKP, MAC Ntrip fully supportable

## COMMUNICATION

I/O	Type-C (OTG+Fast Charge+Ethernet) Radio antenna TNC interface
UHF Radio Module	X-link 2W 410-470MHz
Protocol	TrimTalk, SOUTH, X-link, HUACE, HI-TARGET
Cellular	Through controller's network
WiFi	802.11b/g/n Hotspot/Data Link
Bluetooth	Bluetooth 2.1 + EDR and 4.0
NFC	<10cm

## CAMERA

Resolution	2 MP
Field of View	75°

## INTERFACES

Button	1
LED Indicator	Data Link, Bluetooth, Recharging Battery level

## POWER SUPPLY

Battery	Internal Li-on Battery 7.4V, 6,800mAh
Operating Time	Rover Mode 15h

## PHYSICAL

Dimension	80mm(H), 131mm (W)
Weight	800g
Operating Temp.	-45-75°C
Proof	IP68 2m drop on hard surface 40G 10ms sawtooth wave

### ITEM LIST (ROVER)

Receiver  
Carrying Case  
Charger  
Type-C Cable  
Radio Antenna  
Carbon Fiber Pole  
HI Measuring Plate  
Connector

### ITEM LIST (BASE)

Receiver  
Carrying Case  
Charger  
Type-C Cable  
Radio Antenna  
30cm Pole  
HI Measuring Plate  
Connector



7F, Sicheng Road, Guangzhou 510663, China



[www.ruide.xyz](http://www.ruide.xyz)



[support@ruideinstrument.com](mailto:support@ruideinstrument.com)



[ruideinstrument](#)



[RUIDEPositioning](#)